



**REGIONAL SPECIALISED METEOROLOGICAL CENTRE-TROPICAL CYCLONES, NEW DELHI
TROPICAL WEATHER OUTLOOK**

DEMS-RSMC TROPICAL CYCLONES NEW DELHI DATED 27.07.2021

TROPICAL WEATHER OUTLOOK FOR NORTH INDIAN OCEAN (THE BAY OF BENGAL AND ARABIAN SEA) VALID FOR NEXT 120 HOURS ISSUED AT 0600 UTC OF 27.07.2021 BASED ON 0300 UTC OF 27.07.2021.

BAY OF BENGAL:

UNDER THE INFLUENCE OF YESTERDAY'S CYCLONIC CIRCULATION OVER NORTH BAY OF BENGAL (BOB) AND NEIGHBOURHOOD, A LOW PRESSURE AREA FORMED OVER THE SAME REGION IN THE EARLY MORNING (0000 UTC) OF TODAY, THE 27TH JULY 2021. AT 0300UTC OF TODAY, THE 27TH JULY 2021 IT PERSISTED OVER THE SAME REGION. IT IS VERY LIKELY TO BECOME A WELL MARKED LOW PRESSURE AREA OVER NORTH BOB & ADJOINING BANGLADESH DURING NEXT 24 HOURS AND SLOWLY MOVE WESTWARDS ACROSS WEST BENGAL, JHARKHAND AND BIHAR DURING SUBSEQUENT 48 HOURS.

BROKEN LOW AND MEDIUM CLOUDS WITH EMBEDDED INTENSE TO VERY INTENSE CONVECTION LAY OVER NORTH BOB ADJOINING COASTAL BANGLADESH AND NEIGHBOURHOOD IN ASSOCIATION WITH THE LOW PRESSURE AREA OVER THE REGION. MINIMUM CLOUD TOP TEMPERATURE (CTT) IS MINUS 93 °C.

BROKEN LOW AND MEDIUM CLOUDS WITH EMBEDDED INTENSE TO VERY INTENSE CONVECTION ALSO SEEN OVER NORTH BAY OF BENGAL AND ARAKAN COAST. SCATTERED LOW AND MEDIUM CLOUDS WITH EMBEDDED MODERATE TO INTENSE CONVECTION OVER CENTRAL BAY OF BENGAL, ANDAMAN SEA AND GULF OF MARTABAN. BROKEN LOW AND MEDIUM CLOUDS WITH ISOLATED WEAK TO MODERATE CONVECTION OVER SOUTH BAY OF BENGAL.

PROBABILITY OF CYCLOGENESIS (FORMATION OF DEPRESSION) DURING NEXT 120 HRS):

24 HOURS	24-48 HOURS	48-72 HOURS	72-96 HOURS	96-120 HOURS
NIL	NIL	NIL	NIL	NIL

ARABIAN SEA:

SCATTERED LOW AND MEDIUM CLOUDS WITH EMBEDDED MODERATE TO INTENSE CONVECTION OVER SOUTHEAST ARABIAN SEA. SCATTERED LOW AND MEDIUM CLOUDS WITH EMBEDDED WEAK TO MODERATE CONVECTION OVER NORTH AND ADJOINING CENTRAL ARABIAN SEA.

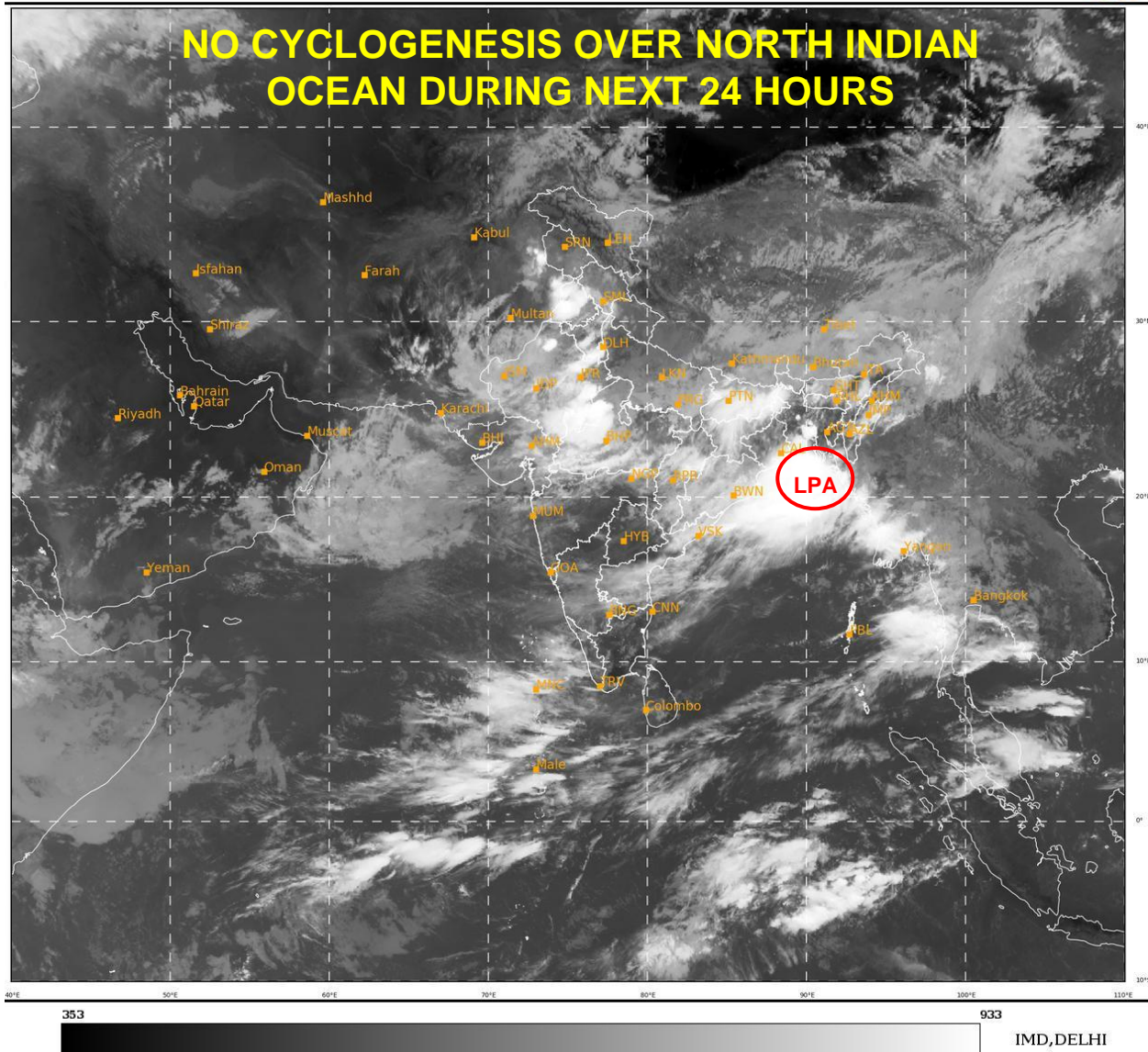
PROBABILITY OF CYCLOGENESIS (FORMATION OF DEPRESSION) DURING NEXT 120 HRS):

24 HOURS	24-48 HOURS	48-72 HOURS	72-96 HOURS	96-120 HOURS
NIL	NIL	NIL	NIL	NIL

REMARKS: NIL

SAT : INSAT-3D IMG
IMG_TIR1 10.8 um
L1C Mercator

27-07-2021/(0300 to 0327) GMT
27-07-2021/(0830 to 0857) IST



- **LPA STANDS FOR LOW PRESSURE AREA**